

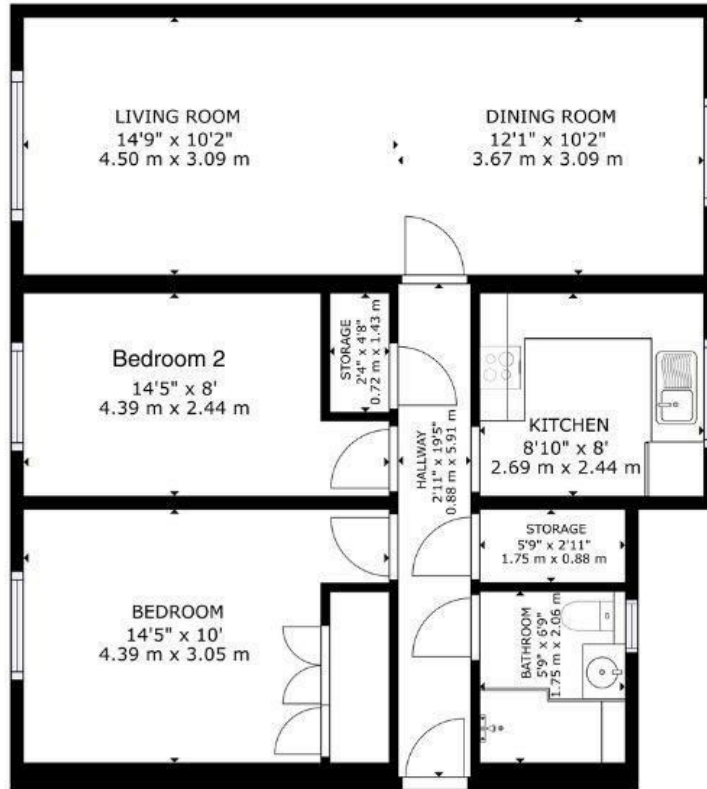


20 MOORE COURT, GRANARY WAY HORSHAM

£250,000
LEASEHOLD

- IMMACULATE AND SPACIOUS TWO BEDROOM APARTMENT
 - HIGHLY SOUGHT AFTER LOCATION
 - MODERN INTEGRATED KITCHEN
 - BRIGHT AND SPACIOUS LOUNGE DINER
- NEWLY RENOVATED
 - TWO SPACIOUS DOUBLE BEDROOMS
 - STUNNING BATHROOM

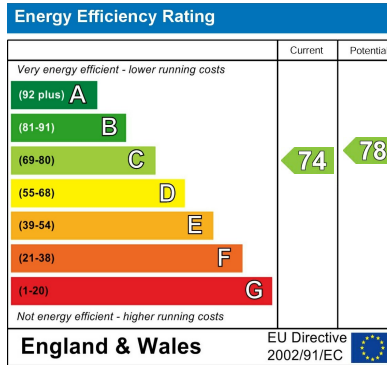




ELTONS
Estate Agents

GROSS INTERNAL AREA
FLOOR 1: 765 sq ft, 71.1 m²
TOTAL: 765 sq ft, 71.1 m²
SIZES AND DIMENSIONS ARE APPROXIMATE, ACTUAL MAY VARY

Matterport



Agents Note: Whilst every care has been taken to prepare these particulars, they are for guidance purposes only. All measurements are approximate and are for general guidance purposes only and whilst every care has been taken to ensure their accuracy, they should not be relied upon and potential buyers/tenants are advised to recheck the measurements

Eltons Estate Agents Horsham 01403 299 771
13 - 15 Queen Street sales@eltons.co.uk
Horsham eltons.co.uk
West Sussex
RH13 5AA

ELTONS
Estate Agents